



APRE

Conferenza
Annuale 2021

Conferenza Annuale APRE 2021

VERSO UN NUOVO FUTURO

(RI) PENSARE IL RAPPORTO TRA SCIENZA E SOCIETÀ

8 > 12 NOVEMBRE | on line

www.aprecon2021.it

#aprecon2021



APRE

Agenzia per la Promozione
della Ricerca Europea

APRE

Agenzia per la Promozione della Ricerca Europea



MISSION

Supporting and promoting the **Italian participation in the EU Framework Programmes** for Research and Innovation *through*

- Information
- Training
- Assistance



+150 APRE ASSOCIATED MEMBERS



APRE associated members share the mission of the Agency. They are among the most important Italian representatives from the **public and the private R&I sector**, and they come from:

- 🏢 University and Research
- 🏢 Industry
- 🏢 Parks and Scientific & Technological Districts
- 🏢 Public Administration
- 🏢 Associative and chamber system
- 🏢 Finance



+40 EXPERTS



- 🏢 Project managers
- 🏢 Policy analysts
- 🏢 Thematic experts
- 🏢 Media and Communication experts
- 🏢 Professionals in Stakeholder Engagement
- 🏢 Legal and financial consultants
- 🏢 Innovation managers





APRE

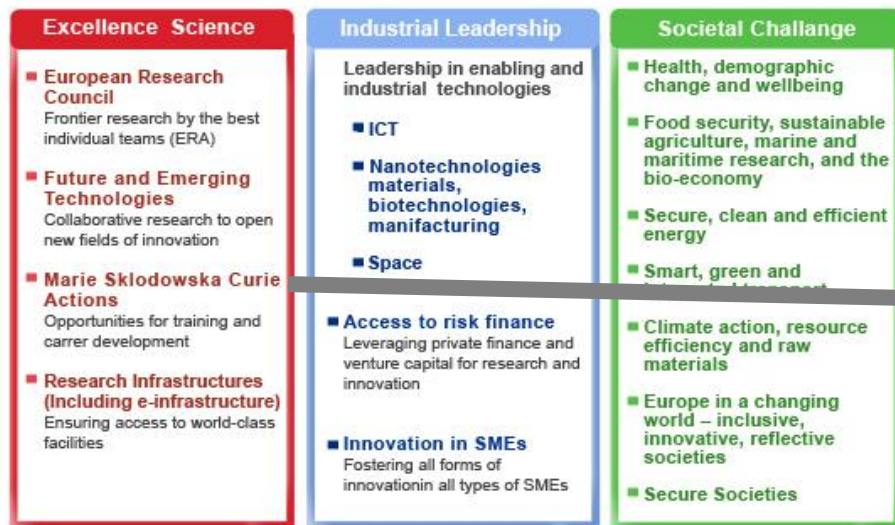
Agenzia per la Promozione
della Ricerca Europea

MSCA - Postdoctoral Fellowship scheme and the impact of Covid-19 on researchers' mobility"

SERENA CHEREN

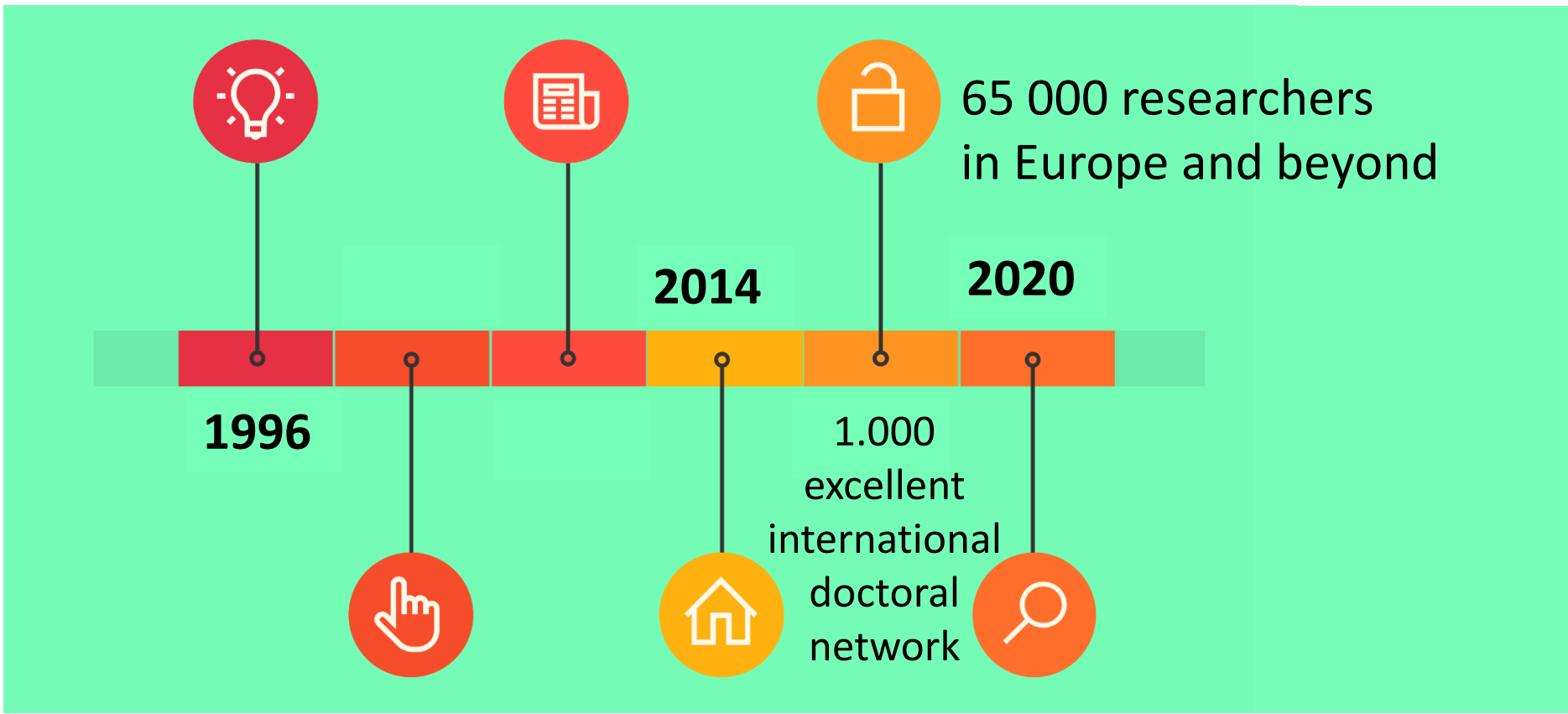
28 OTTOBRE 2021,

UNIVERSITA' DEGLI STUDI DI TORINO



* The European Institute of Innovation & Technology (EIT) is not part of the Specific Programme

The Union's reference programme for doctoral education and postdoctoral training



Postdoctoral Fellowship: main Objective



to enhance the creative and innovative potential of researchers **holding a PhD**, **NEW!** wishing to acquire new skills through advanced training, international, interdisciplinary and inter-sectoral mobility.

Expected impact 1/2

- Enhance the creative and innovative potential of researchers holding a PhD and wishing to diversify their individual competences and skills through advanced training, international, interdisciplinary and inter-sectoral mobility while implementing excellent research projects across all sectors of research;
- Strengthen Europe's human capital base in R&I with better trained, innovative and entrepreneurial researchers;
- Enhance the quality of R&I contributing to Europe's competitiveness and growth;

Expected impact 2/2

- ▣ Contribute to Europe's attractiveness as a leading destination for R&I and for good working conditions of researchers;
- ▣ Facilitate knowledge transfer and brain circulation across the ERA;
- ▣ Foster the culture of open science, innovation and entrepreneurship.

Expected Outcomes 1/2

For supported postdoctoral fellows:

- Increased set of research and transferable skills and competences, leading to improved employability and career prospects of MSCA postdoctoral fellows within academia and beyond;
- New mind-sets and approaches to R&I work forged through interdisciplinary, inter-sectoral and international experience;
- Enhanced networking and communication capacities with scientific peers, as well as with the general public that will increase and broaden the research and innovation impact.

Expected Outcomes 2/2

For participating organisations:

- ▣ Increased alignment of working conditions for researchers in accordance with the principles set out in the European Charter for Researchers and the Code of Conduct for the Recruitment of Researchers;
- ▣ Enhanced quality and sustainability of research training and supervision;
- ▣ Increased global attractiveness, visibility and reputation of the participating organisation(s);
- ▣ Stronger R&I capacity and output among participating organisations; better transfer of knowledge;
- ▣ Regular feedback of research results into teaching and education at participating organisations.

Recruited researchers

🔗 postdoctoral researchers



🔗 mobility rule

🔗 Supported researchers can be of any nationality

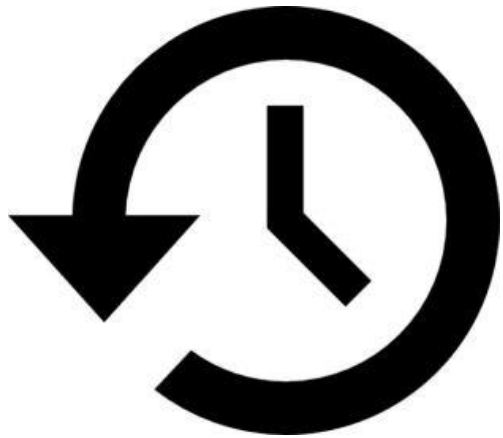
- Global Postdoctoral Fellowship: nationals or long-term residents of EU Member States or Horizon Europe Associated Countries

🔗 supported researchers must have a **maximum of 8 years time equivalent experience in research**

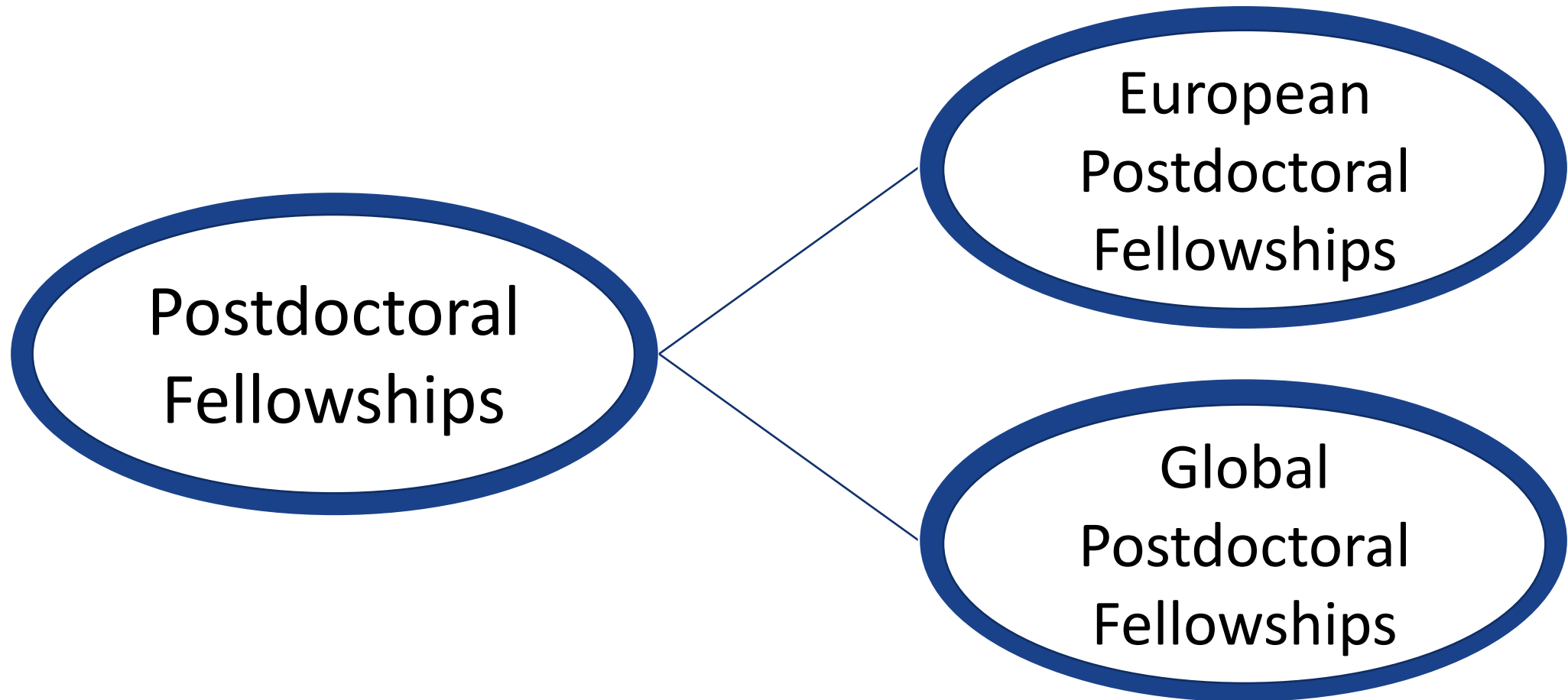


- Years **outside research and career breaks** will not be counted

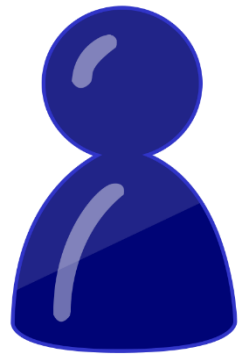
Mobility rule



- Recruited researchers must not have resided or carried out their main activity (work, studies, etc.) in the country of the beneficiary (for European Postdoctoral Fellowships), or the host organisation for the outgoing phase (for Global Postdoctoral Fellowships) for more than 12 months in the 36 months immediately before the call deadline.

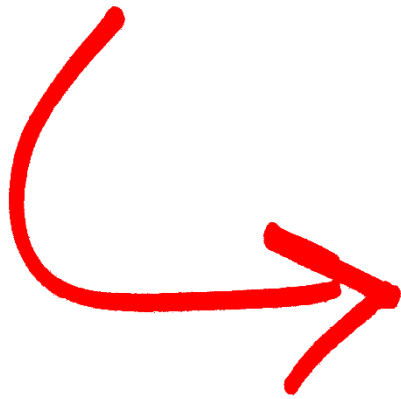


European Postdoctoral Fellowships



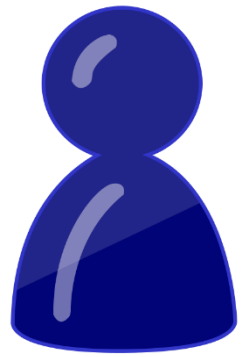
any nationality

from any country



12/24 months

Global Postdoctoral Fellowships



European nationals or long-term residents

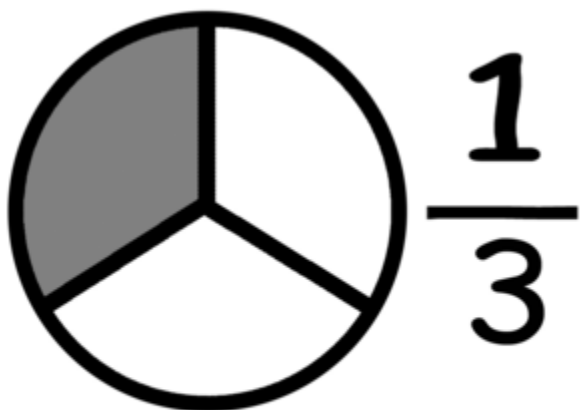


Secondments

in Europe and beyond



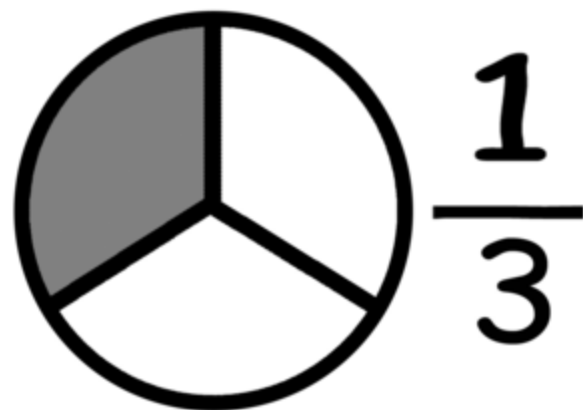
European Postdoctoral Fellowships



one-third

fellowship duration

Global Postdoctoral Fellowships



one-third

of the outgoing phase



Beneficiary (or any other organisation mentioned in the description of the action)

Placements in the non-academic sector

NEW!

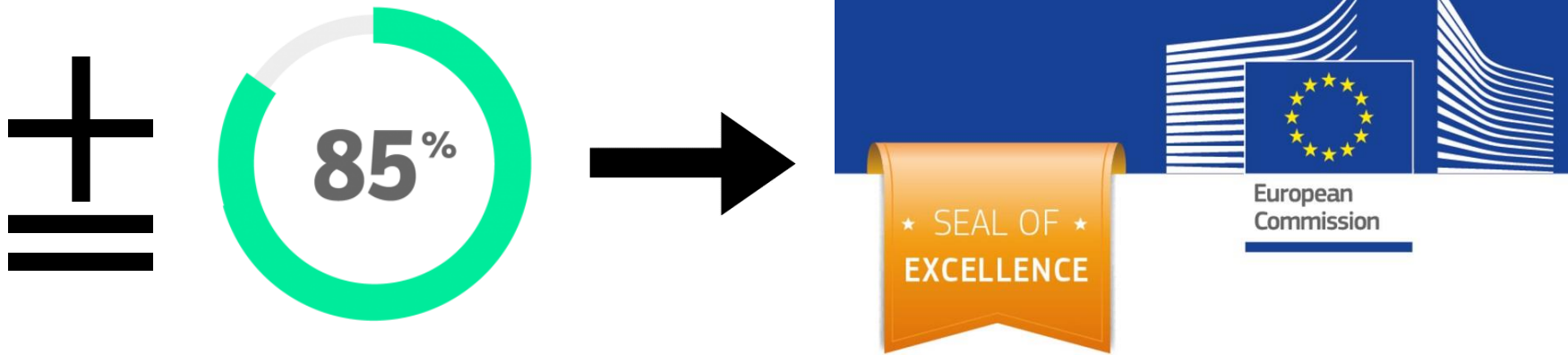


PLACEMENT



associated partners

Seal of Excellence



Resubmission

Proposals involving the same recruiting organisation (and for Global Postdoctoral Fellowships also the associated partner) and individual researcher

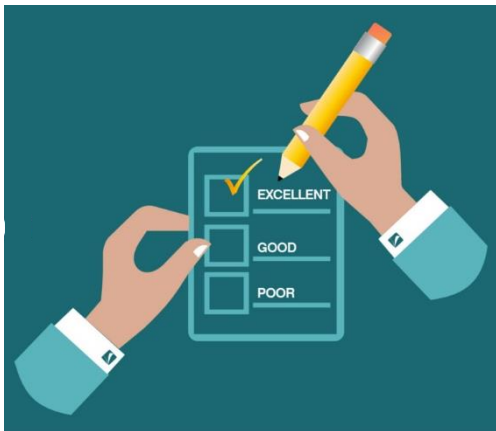


should not be resubmitted the following year



Award criteria

Excellence	Impact	Quality and efficiency of the implementation
50%	30%	20%
Weighting		



\pm

70%

considered for funding

Evaluation panels

In Postdoctoral Fellowships, proposals will be evaluated by one of eight 'main evaluation panels':

- ✧ Chemistry (CHE),
- ✧ Social Sciences and Humanities (SOC),
- ✧ Economic Sciences (ECO),
- ✧ Information Science and Engineering (ENG),
- ✧ Environment and Geosciences (ENV),
- ✧ Life Sciences (LIF),
- ✧ Mathematics (MAT),
- ✧ Physics (PHY).

Each panel will establish two ranked lists, one for European and one for Global Postdoctoral fellowships.



MSCA Postdoctoral Fellowships	Contributions for the recruited researcher per person-month					Institutional contributions per person-month		unit
	Living allowance	Mobility allowance	Family allowance (if applicable)	Long-term leave allowance (if applicable)	Special needs allowance (if applicable)	Research, training and networking contribution	Management and indirect contribution	
	EUR 5 080	EUR 600	EUR 660	EUR 5 680 x % covered by the beneficiary	requested unit ⁵³ x (1/number of months)	EUR 1 000	EUR 650	

Opening & Deadline(s)



	Opening	Deadline
HORIZON-MSCA-PF- 2021 MSCA Postdoctoral Fellowships 2021	22 Jun 2021	12 Oct 2021
HORIZON-MSCA-PF- 2022 MSCA Postdoctoral Fellowships 2022	13 Apr 2022	14 Sep 2022

The Covid-19 effects on reserachers' mobility

🏠 The Commission's general approach:

Flexibility

- As much flexibility as possible within the limits of MSCA-IF rules as they appear in the Grant Agreement
- Postponing reporting deadlines, part-time, telework, etc., all on a case-by-case basis
- Postponing start date of the project
- Suspension (requires fellow's agreement, beneficiary encouraged to use the institutional costs during the suspension period)
- Flexibility on project implementation (fieldwork, change of secondment, scientific deliverables, etc.)

Communication

- Changes must be agreed with REA prior to their implementation

☞ Mobility

- ☞ A researcher could have worked “remotely” from his/her current place of residence, but this had to be decided with the PO and duly justified; only for a period of time; if the nature of the project allowed this approach and the fellows must relocate to the country of the beneficiary as soon as conditions allowed it.
- ☞ If a researcher worked for an entity established in a country A, but due to covid-19, he/she worked physically in country B, for the mobility rule the researcher would not be eligible neither for country A neither for country B.

☞ (im)possibility to travel

- ☞ Case-by case basis taking into account the force majeure situation AND the personal situation of the fellow
- ☞ The assessment of each individual case involves the PO, the HoS and the legal adviser.

☞ Secondment

- ☞ No secondment was possible during the period of suspension

Source: European commission

Useful links

- 🔗 [MSCA Work Programme 2021-2022](#)
- 🔗 [Postdoctoral Fellowships Guide for Applicants 2021](#)
- 🔗 [Proposal template and instructions on how to fill it in](#)
- 🔗 [Specific FAQs for Postdoctoral Fellowships call for proposals 2021](#)

MSCA Team contacts

msca@apre.it



Angelo D'Agostino

dagostino@apre.it



Marco Ferraro

ferraro@apre.it



Serena Cheren

cheren@apre.it

APRE

Agenzia per la Promozione della Ricerca

Europea

Via Cavour, 71

00184 - Rome

www.apre.it

Tel. (+39) 06-48939993

Fax. (+39) 06-48902550



Email: segreteria@apre.it

Tel. +39 06 48 93 9993

www.apre.it

